

HC1 HAND HELD CRIMPER TOOL

OPERATING INSTRUCTIONS



PARTS

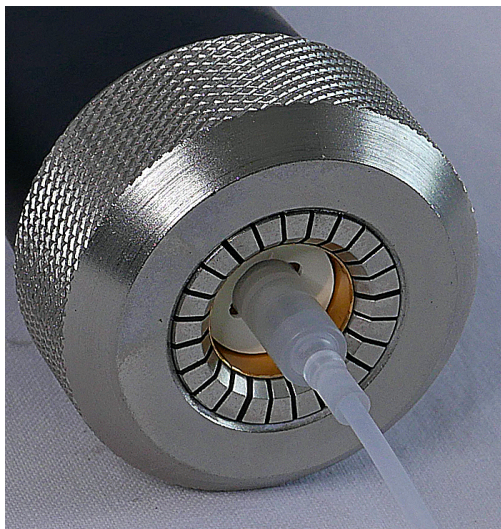
- 1) Lever
- 2) Head nut
- 3) Crimp adjuster
- 4) Lock nut
- 5) Body

a) CHECK THAT THE COLLET IS THE CORRECT SIZE



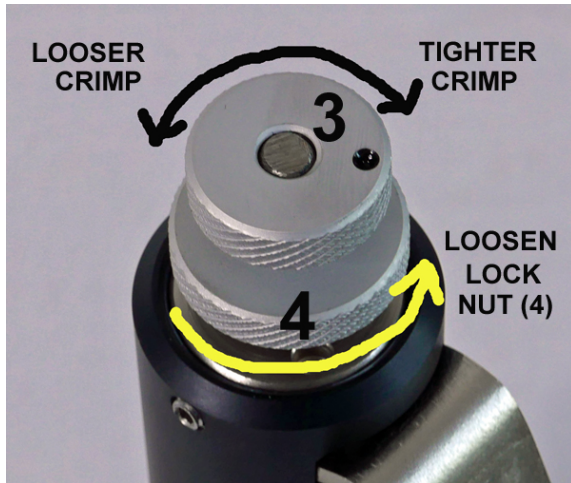
If it has to be changed, Unscrew head nut (2) and remove it. Pull out the collet (6) and replace it with a collet of the correct size. Replace and tighten the head nut (2)

b) INITIAL ADJUSTMENT



Push the uncrimped pump into the crimp head as far as it will go.

If the position of the pump does not look like this, then do the following:-



Loosen lock nut (4). It may be necessary to loosen the lock nut (4) for up to 2 turns, depending on the position of the pump. Turn the adjuster either clockwise or anti-clockwise for as much as is needed to get the pump into the position as shown in the previous picture. Leave the lock nut loose at this stage. Remember to tighten the lock nut when you are happy with the crimp quality.

c) TEST THE CRIMP



Hold the crimper as shown in the picture. Grip the body (5) and the hand lever (1) low down. This reduces the amount of effort required to crimp.



Crimp completed

CRIMP EXAMPLES

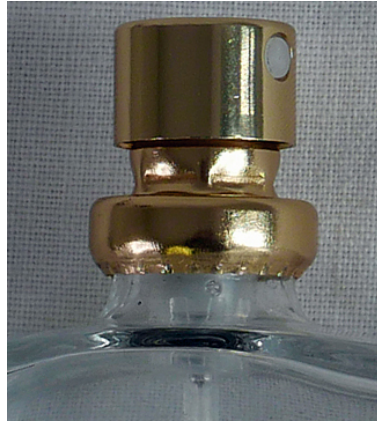


Crimp looks good but is loose. Turn adjuster (3) clockwise 1/4 turn or more



Crimp setting too tight. Turn the adjuster (3) 1/4 turn anti-clockwise

Good crimp.



Good crimp. Different pump.

